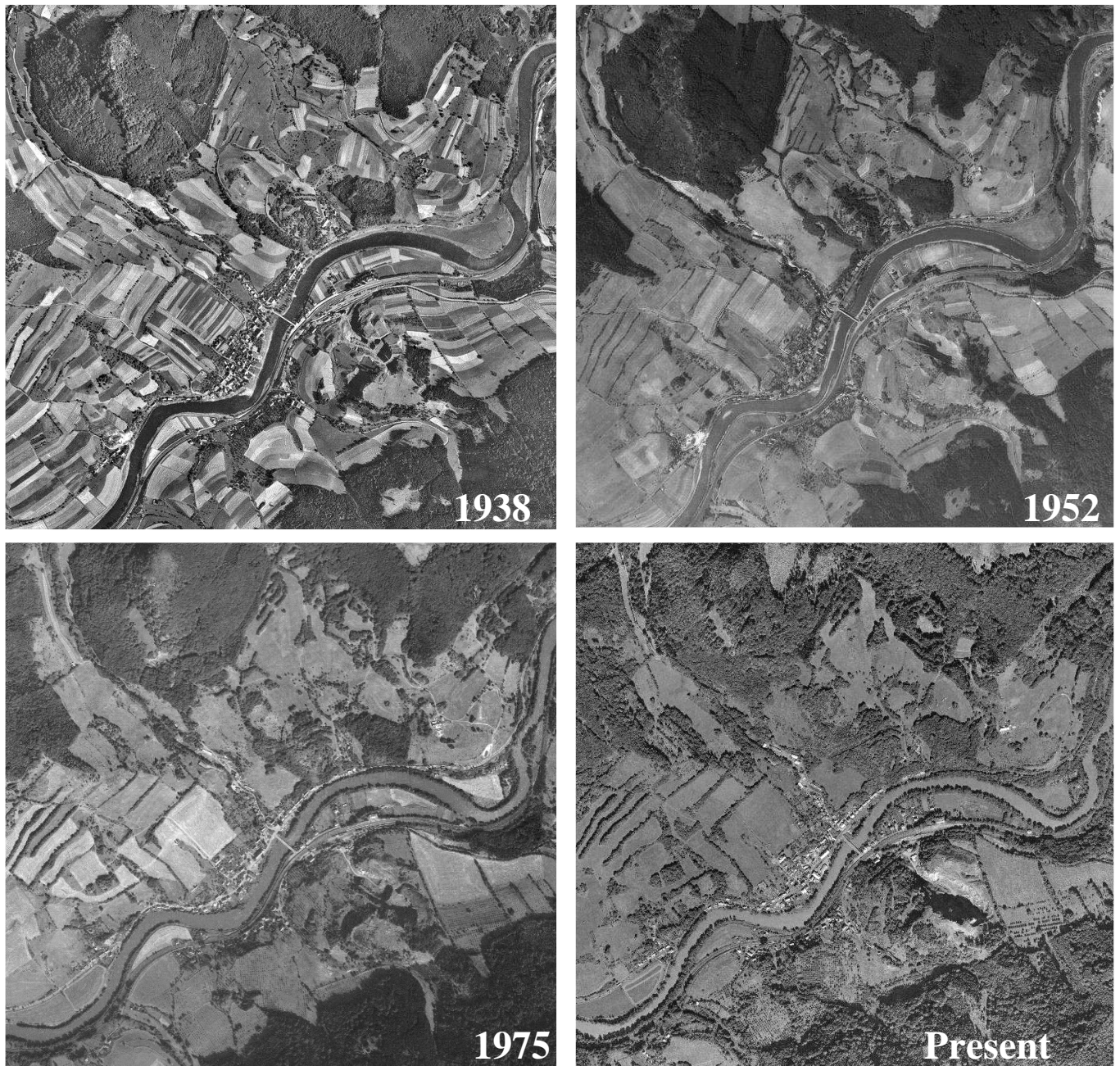


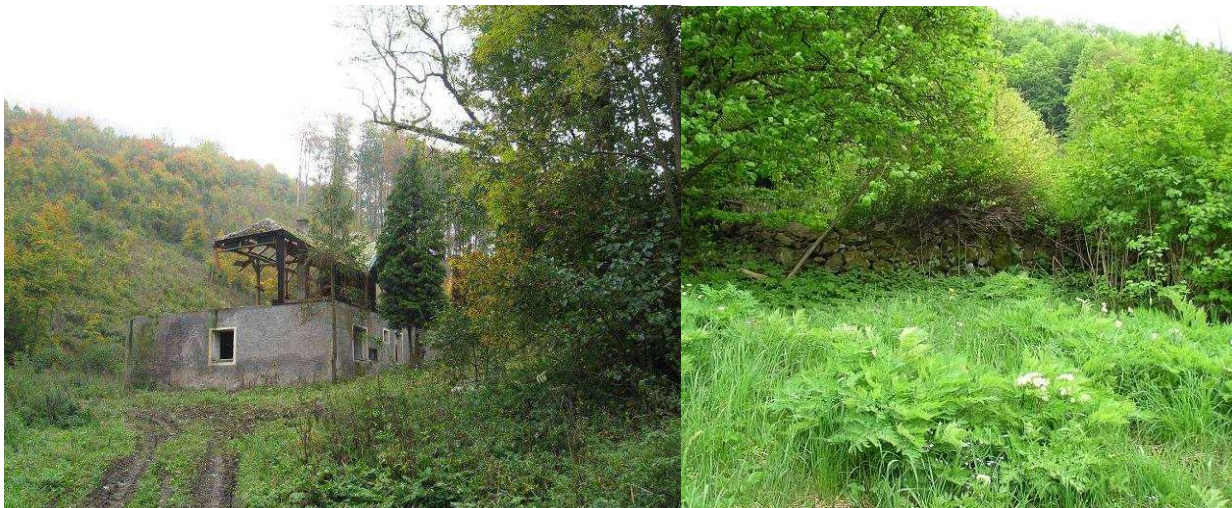
## ***Annex 10 – Photo documentation of threatening factors – Poohří***

### ***1. Change of the farming and landscape use method and loss of biotopes***



**Fig. 1 – 4:** Areal photographs of Stráž nad Ohří from various years document the changes of farming methods (transition from small to large scale farming) and gradual landscape overgrowing (photographs taken from the Military Topography Institute at Dobruška)





5	6
7	8

**Fig. 5: Old buildings have been demolished by now, MEA Hradiště, 2007**

**Fig. 6: Stonewalls get overgrown if not maintained regularly, Peklo, 2007**

**Fig. 7: Old and abandoned ways get gradually covered by vegetation and extinct Kamenec, 2006**

**Fig. 8: Small pools and ponds gradually disappear, Korunní, 2007**

**Fig. 9: Ohře river banks covered with impermeable neophytes, Damice, 2007**